



TEXHOUSE

HOME OF FASHION



## About Us

We value our customers.

Since 2017, Texhouse BD has been at the forefront of the readymade garment sourcing business with numerous reputable clients from all over the world. Alongside our main office in Dhaka, Bangladesh, we also have liaison offices in USA and France where the company is run by industry veterans with over two decades of experience. To further strengthen our foothold in this industry, we also have our own state-of-the-art manufacturing arm for undergarments (Rose Intimates Ltd.), vertical circular knit products (Radical Design Ltd.) alongside our world-class denim manufacturing arm (Euro Denim Ltd.) which are all capable of producing and manufacturing highest quality garments as per the buyers' needs. Also we have many more manufacturing partners across all categories of apparels, leather & jute products.



# Mission & Vision

It's important to have a good customer service.



## Mission

Texhouse BD strives in providing its customers with an unparalleled sourcing experience and is committed towards building long-lasting relationships. Our in-house manufacturing units allow us to streamline our sourcing process and deliver goods on-time and at affordable prices.



Texhouse BD strives in providing its customers with an unparalleled sourcing experience and is committed towards building long-lasting relationships. Our in-house manufacturing units allow us to streamline our sourcing process and deliver goods on-time and at affordable. prices.



# WHY CHOOSE US?

Our management, led by an industry veteran with over 20 years of experience in the field has assembled capable and hardworking teams of merchandisers and quality assurance personnel in order to ensure customer satisfaction and on-time delivery of goods. Apart from that our own manufacturing arms allow us to maximize vertical integration and minimize lead times all the while being able to develop a wide range of products in-house. Our goal is to create long-lasting relationships with our customers and grow our company in a sustainable and transparent manner.

# Our Services

## To Our Customers



- We provide bespoke solutions according to the needs of our customers in order to meet their demands and solve any issues that may arise.
- We provide design support according to client's needs and also maintain our own catalogue of designs to choose from.
- Maintain competitive and fair-pricing strategies.
- Provide transparent Product Tracking services to our customers throughout various stages of manufacturing as well as maintain Quality Assurance by experienced teams.
- Provide a plethora of options to meet customer's pricing targets.

# Our Services

## To Our Suppliers



- Committed to forming and maintaining good relationships with suppliers for mutual benefit.
- Provide working capital assistance in order to facilitate meeting deadlines and ensure quality work.
- Keep our suppliers up-to-date with current market trends and innovations in order to enhance their quality and efficiency.
- Provide support to maintain all sorts of compliance standards in order to meet buyers' demands.





# Our Partners



**GĒMO**



**EVERLAST**



**Walmart+**

**ORCHESTRA**  
MODE ENFANT • MATERNITÉ • PUÉRICULTURE

**JULA**

**CONTRAST**  
COMPANY

**Systeme U**

**BIOWORLD**

**XR**  
XRAY  
JEANS



# Our Products



MENSWEAR

KIDS WEAR

SWIMWEAR &  
ACTIVEWEAR

WOMENSWEAR

UNDERGARMENTS

ACCESSORIES



# MENSWEAR







# WOMENSWEAR





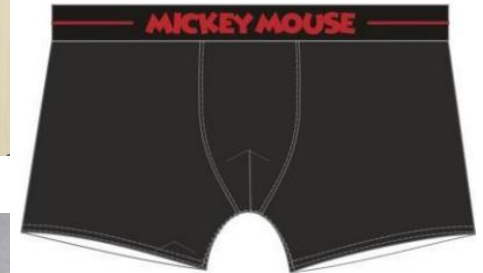
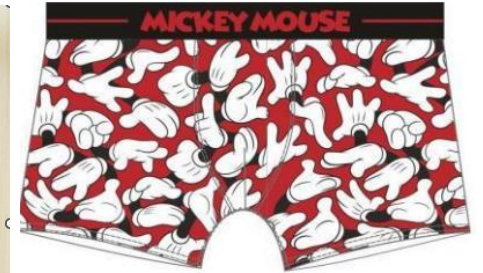


# KIDS WEAR





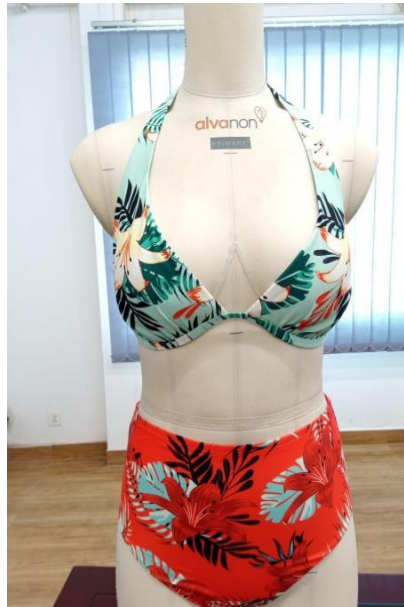
# UNDERGARMMENTS







# SWIMWEAR & ACTIVEWEAR







# ACCESSORIES





# OUR TEAM

**Anup Kumar Banik**

(Chairman)

Cell: +880 1711675813

anupkumar@texhouse.net

**Sanjay Kumar Naha**

(Managing Director)

Cell: +880 1713044750

naha@texhouse.net

OFFICE ADDRESS

HOUSE – 16, ROAD – 03, SECTOR – 5, UTTARA,  
DHAKA – 1230, BANGLADESH.

*i.e. Only 15 minutes drive from the Dhaka International Airport.*

**Thank you!**

**TEXHOUSE**  
HOME OF FASHION

